



STEP BY STEP GUIDE FOR FIRST-TIME USERS OF THE US SIMULATOR

Mariana Tome, St6

Ultrasound Rep, 2021

On arrival to the simulator room

**This is what you should expect
when you enter the room.
Please leave it exactly has you
find it.**



**TRASVAGINAL
SIMULATOR**



**TRANSABDOMINAL
SIMULATOR**



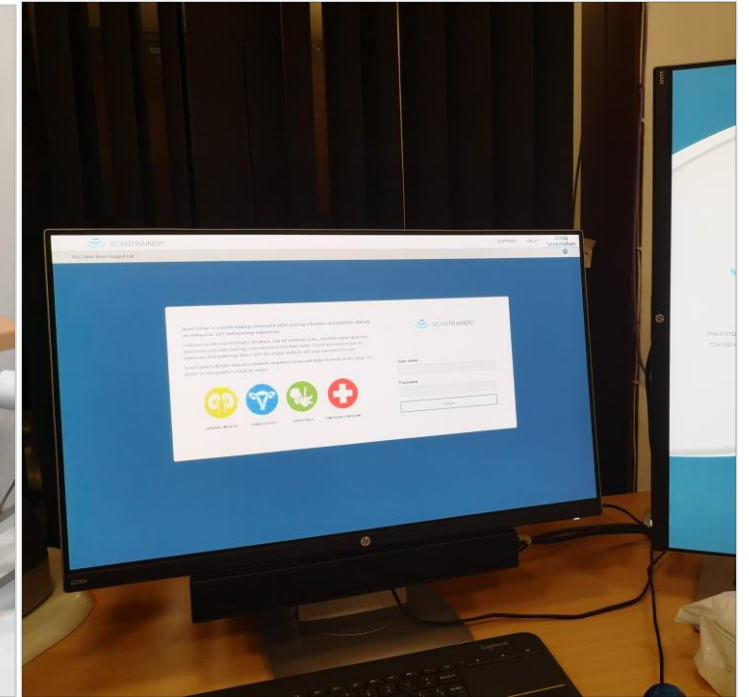
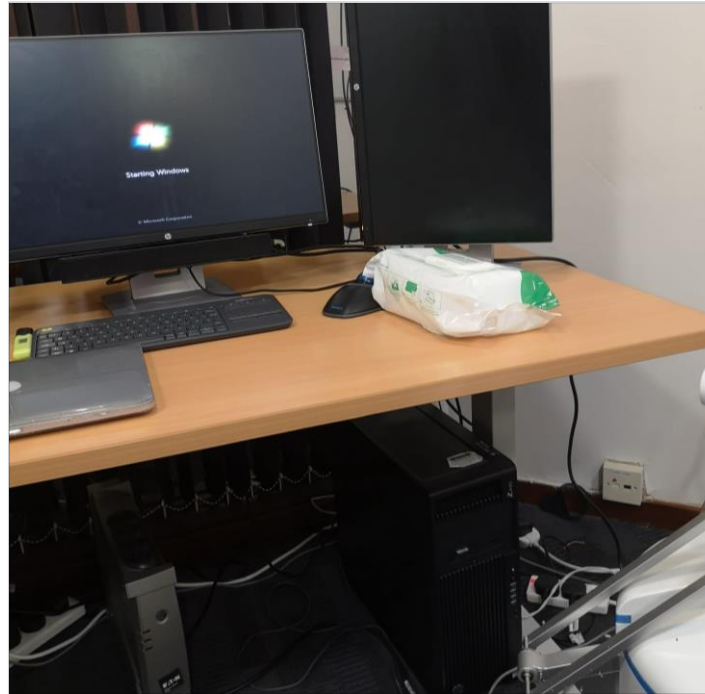
For each simulator you have two monitors: the ones on the right hand side are for TA scanning and the two one the left are for TV scanning.

Before you
start...



Check if both wall plugs are on and press power on the PC tower you would like to use.

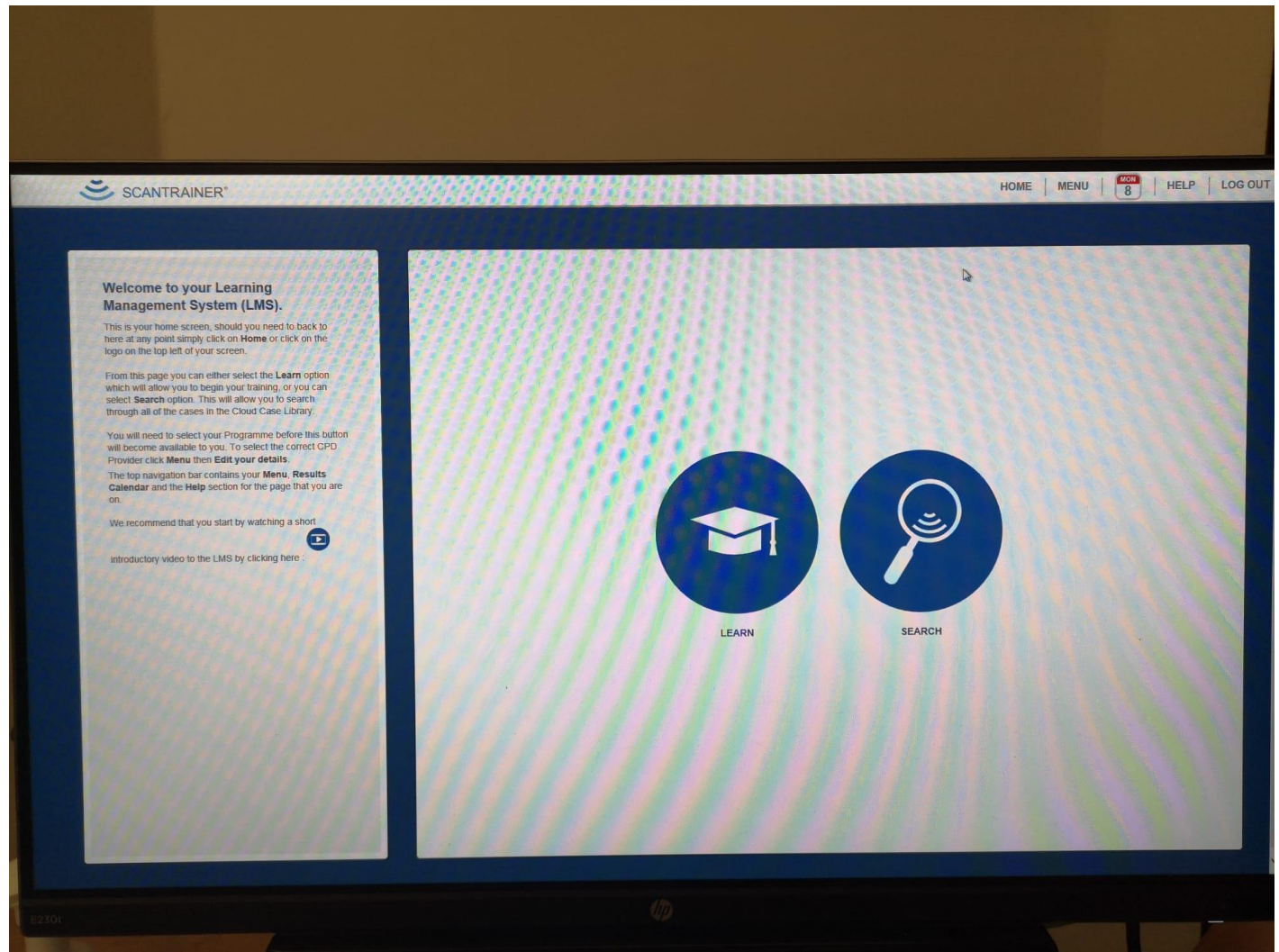
After starting the pc the Scan Trainer program normally opens automatically and you just need to log in with the user name I have created for you. If this doesn't happen just press the logo on the desktop



- **Check here if you can't remember your password:**

https://docs.google.com/spreadsheets/d/13tBbbsZpswL56HWhB_rhQrwy66E2p21Z_IZDgNd-Bsg/edit#gid=0

Welcome Message and you can watch a short introduction of how to use the Scan Trainer program.



Ultrasound Training: Mandatory Simulator Modules

Name:
Training Number:
Level of Training:

BASIC Mandatory Ultrasound Modules - Core Training (by ST3)

Modules	Knowledge criteria	Assessment completed on:
BASIC PRINCIPLES	<ul style="list-style-type: none"> - Skills Learning <ul style="list-style-type: none"> • Ultrasound physics • Probe manipulation • Scanning technique - Skill Assessment 1&2 	
PREGNANCY	<ul style="list-style-type: none"> - Skills Learning <ul style="list-style-type: none"> • TV core obstetric without NT <ul style="list-style-type: none"> ○ Uterus and adnexa ○ Gestational sac, fetus, placenta ○ Measuring CRL • TA core obstetrics 12 weeks <ul style="list-style-type: none"> ○ Uterus and fetus ○ Fetus ○ Placenta • TA core obstetric Fetal growth <ul style="list-style-type: none"> ○ Confirm viability ○ Assessment Fetal head (BPD, OFD, HC) ○ Assessment Fetal abdomen (AC) ○ Assessment Femur length ○ Assessment Amniotic fluid (AFI, DVP) ○ Assessment Placenta site 	

Intermediate: Ultrasound of normal fetal anatomy

Modules	Knowledge criteria	Assessment completed on:
OBSTETRICS ATSM: FM	<ul style="list-style-type: none"> - TA Advance Obstetrics FASP <ul style="list-style-type: none"> • Fetal viability • Assessment uterus and placenta • Examination of Fetal head (BPD, HC, cerebellum) • Examination of face • Examination of fetal heart • Examination chest • Examination of Abdomen • Examination of fetal spine • Assessment of limbs 	

ATSM: Fetal Medicine (FM), High Risk Pregnancy (HRP), Acute Gynaecology and Early Pregnancy (AGEP), Advanced Laparoscopic Surgery for the Excision of Benign Disease (ALAP) Subfertility and Reproductive Health (SRH). ASM: Safe Practice in Abortion Care (SPAC)

This are the modules to help you organising your simulation sessions.

If you want, you can use them for your e-portfolio.

Ultrasound Training: Mandatory Simulator Modules

Name:
Training Number:
Level of Training:

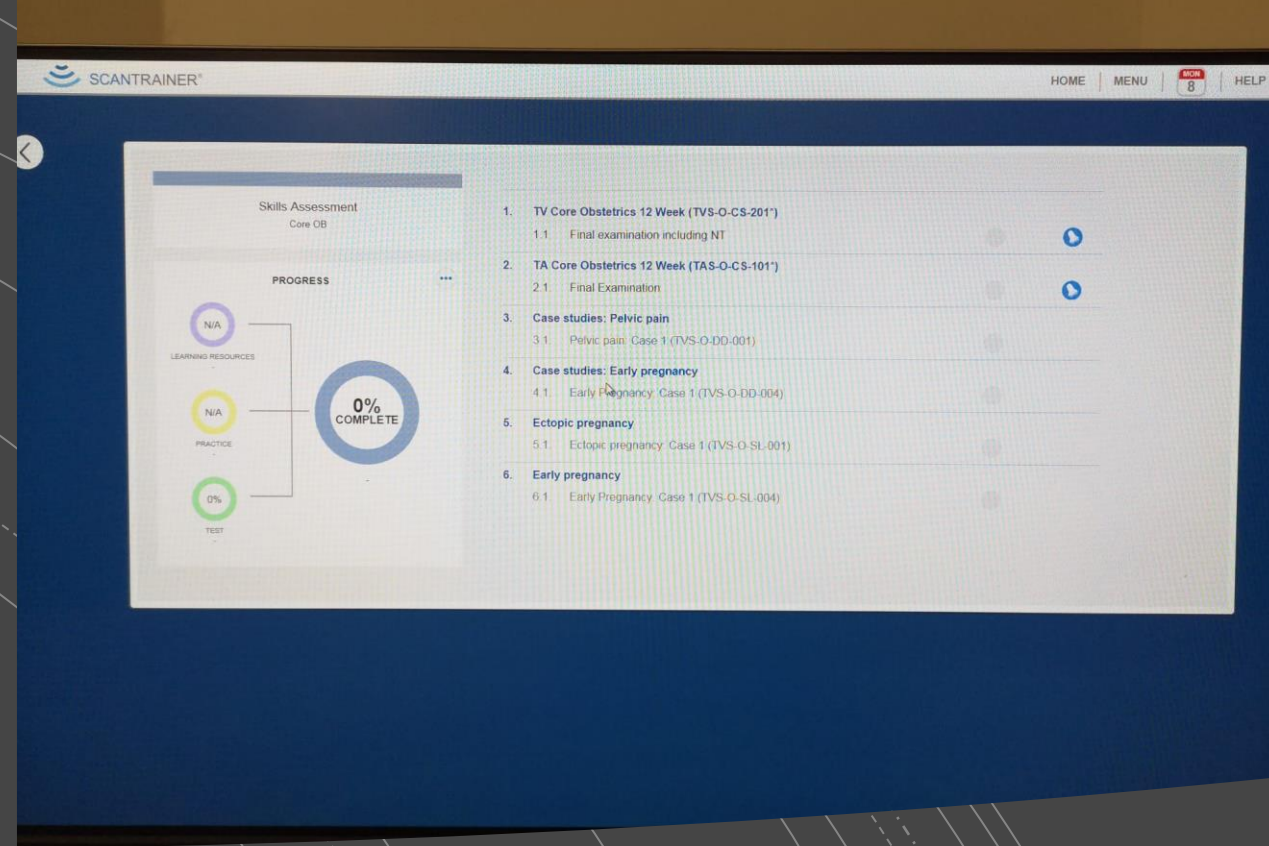
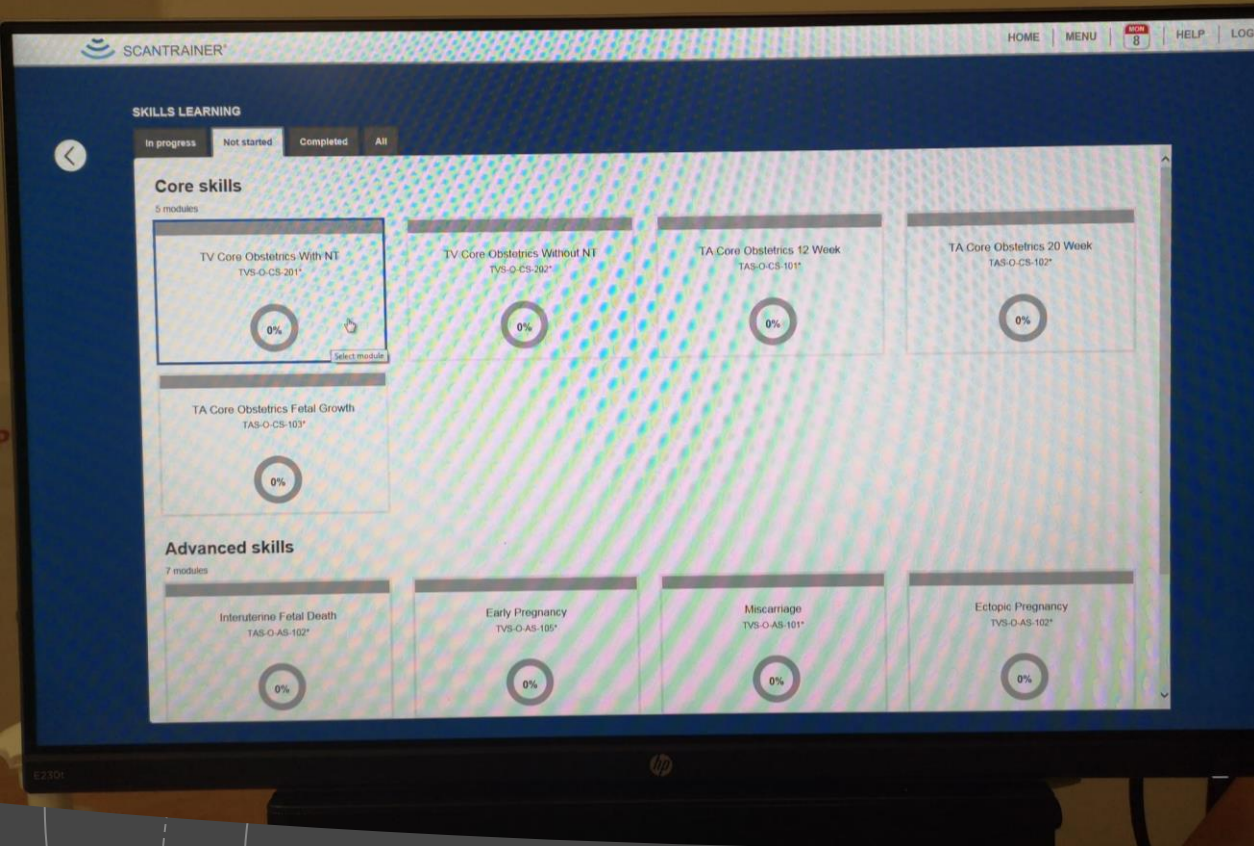
Intermediate: Ultrasound examination in gynaecology (non-pregnant patient)

Modules	Knowledge criteria	Assessment completed on:
GYNAECOLOGY ATSM: AGEP, ALAP, SRH ASM: SPAC	<ul style="list-style-type: none"> - TA Core Gynaecology <ul style="list-style-type: none"> • Structures of the female pelvis • Uterus • Ovaries - Basic Skills for TV scanning <ul style="list-style-type: none"> • Structures of pelvis • Uterus • Ovaries • Uterus and adnexa • Gestational sac, fetus and placenta • Measurement of the CRL - Advance skills: fibroid - Advance skills: Ovarian cyst - Case studies: Pelvic pain (4 x cases) - Case studies: Pelvic masses (4 x cases) - Ovarian fibroma, pelvic cyst, fibroid, IUCD, Dermoid cyst 	

Intermediate: Ultrasound examination of early pregnancy complications

Modules	Knowledge criteria	Assessment completed on:
GYNAECOLOGY ATSM: AGEP, SRH	<ul style="list-style-type: none"> - TA Core Gynaecology <ul style="list-style-type: none"> • Structures of the female pelvis • Uterus • Ovaries - Basic Skills for TV scanning <ul style="list-style-type: none"> • Structures of pelvis • Uterus • Ovaries • Uterus and adnexa • Gestational sac, fetus and placenta • Measurement of the CRL - Advance skills: Early pregnancy - Advance skills: Ectopic pregnancy - Advance skills: Miscarriage 	

ATSM: Fetal Medicine (FM), High Risk Pregnancy (HRP), Acute Gynaecology and Early Pregnancy (AGEP), Advanced Laparoscopic Surgery for the Excision of Benign Disease (ALAP) Subfertility and Reproductive Health (SRH). ASM: Safe Practice in Abortion Care (SPAC)



- **Start Scanning and Enjoy your session.**
- **You can check your progress and your assessments on each module.**

PLEASE DO NOT
USE THESE
COMPUTERS

THEY ARE NOT
OWNED BY THE
TRUST

Many thanks

PLEASE DO NOT
USE THESE
COMPUTERS

THEY ARE NOT
OWNED BY THE

1. When you finish sign the check in form that is on the desk for the team to record attendance and use of the simulators.

2. Clean the handle of the probes with clinell after finishing your session.

3. Leave the room as you found it.



GENERAL MEDICAL



GYNAECOLOGY



OBSTETRICS



EMERGENCY MEDICINE

Passw